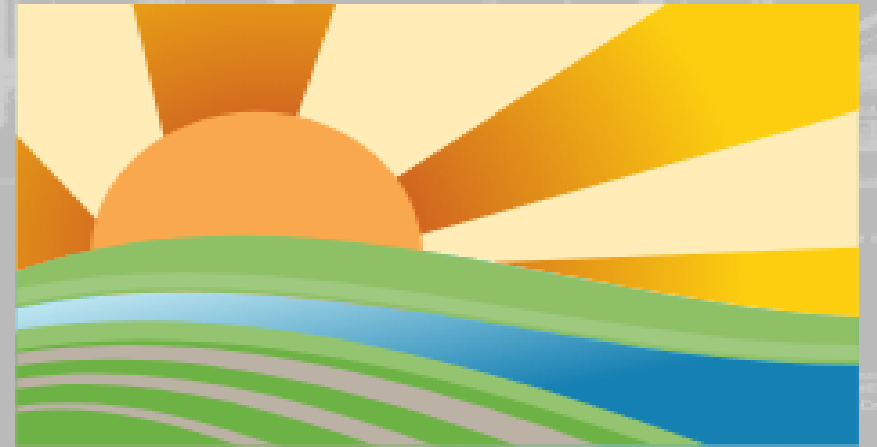


Perspectives on the Comprehensive Everglades Restoration Plan Implementation Process

Cindy Thomas
Native American Program Manager
Jacksonville District

April 17, 2024



NCER2024



U.S. ARMY



US Army Corps
of Engineers

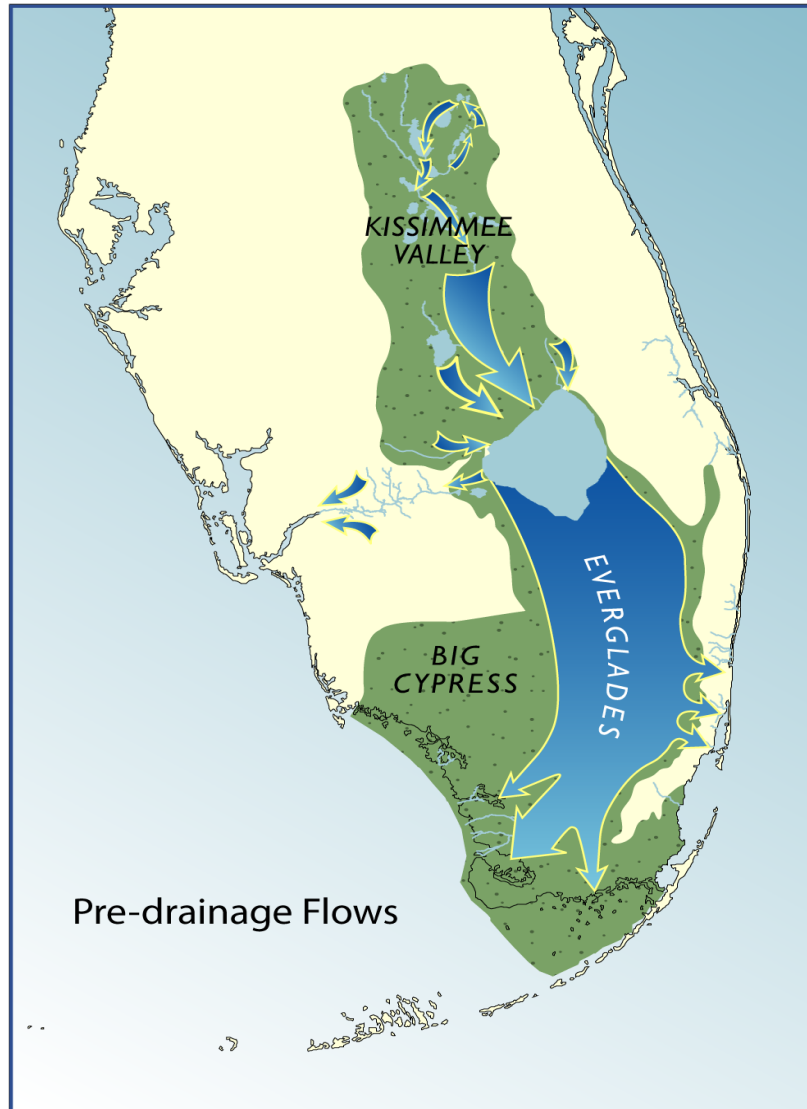


U.S. ARMY

The Historic Everglades Ecosystem



2



- Natural system composed of over 9 million acres of lakes, rivers and wetlands
- Water flowed from central Florida through Lake Okeechobee and south into Florida Bay
- Unique and diverse mosaic of habitat
- Over 60 inches of rain annually
- Very flat - slopes one inch per mile



U.S. ARMY



South Florida Ecosystem

Area - 18,000 square miles

Twice the size of New Jersey

Population today - ~7 million



U.S. ARMY



Pre-development
"River of Grass"



mid 1800s

Swamp/Muck Lands
"Reclaimed" for
Agriculture



early 1900s

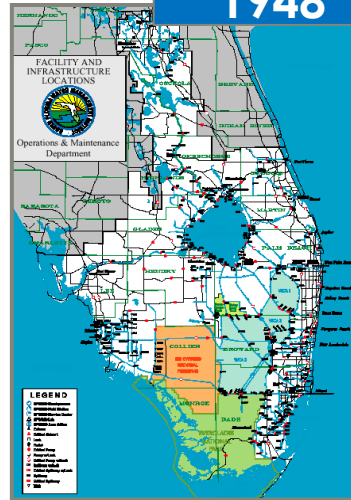
Settlement Continues



1926 & 1928

Catastrophic
Hurricanes

WRDA 2000
CERP
Authorized



1948

C&SF Authorized



1947

Extensive
Floods



1930s

Muck Fires

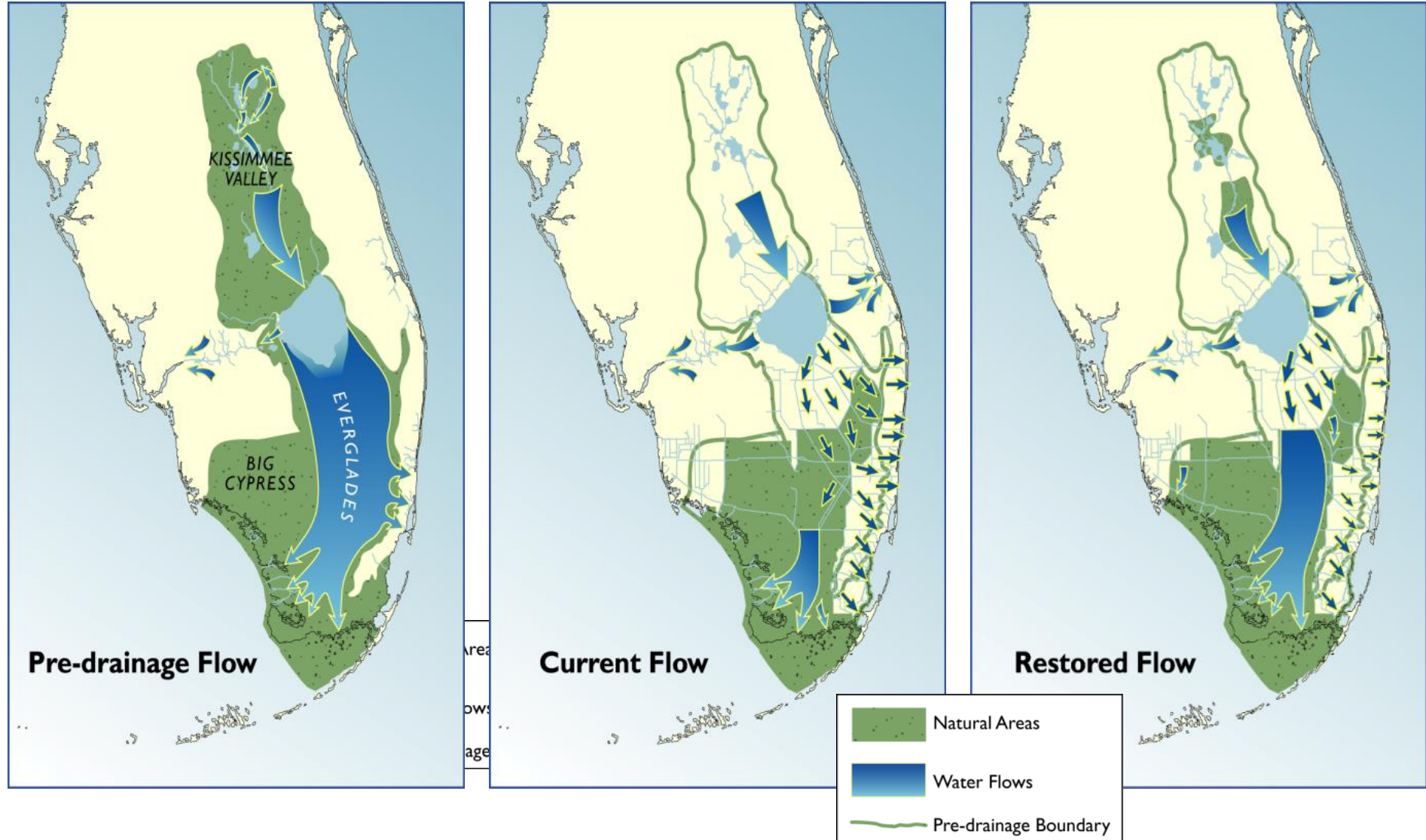


Changes



U.S. ARMY

Central Everglades Restoration Plan Goal





U.S. ARMY

Planning Study Participation Opportunities



6

- RECOVER Meetings
 - Module Development
 - Weekly meetings

- Working Group and Science Coordination Group Membership and Meetings

- Task Force Meetings and Membership

- Project Sub-team Meetings
 - Eco-sub-team
 - Water Quality sub-team
 - Cultural Resource sub-team
 - Plan Formulation sub-team

COMPREHENSIVE EVERGLADES RESTORATION PLAN

WESTERN EVERGLADES RESTORATION PROJECT (WERP)

INTEGRATED PROJECT IMPLEMENTATION REPORT & ENVIRONMENTAL IMPACT STATEMENT



Trusted Partners Delivering Value Today for a Better Tomorrow



U.S. ARMY

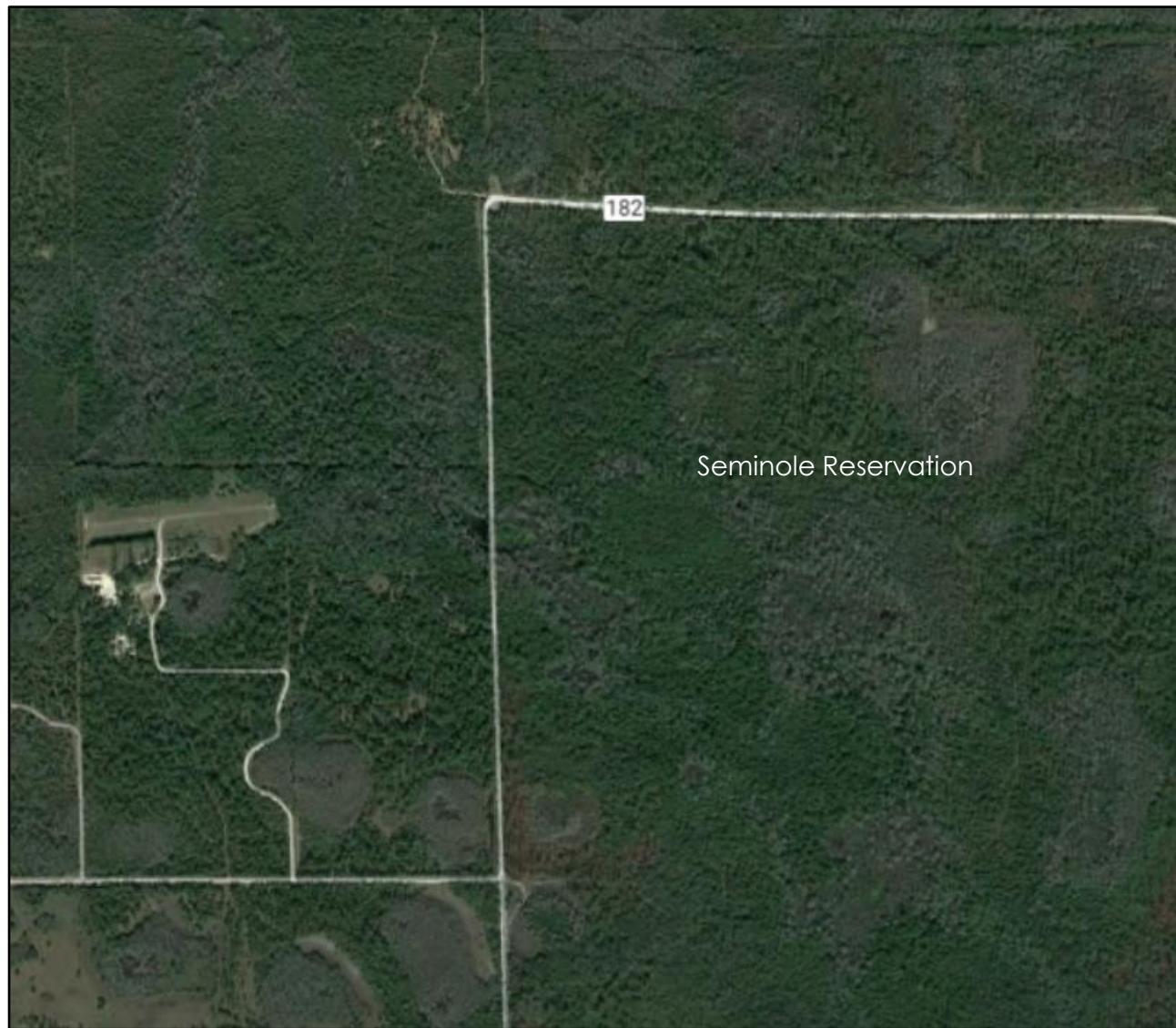


US Army Corps of Engineers
BUILDING STRONG





U.S. ARMY

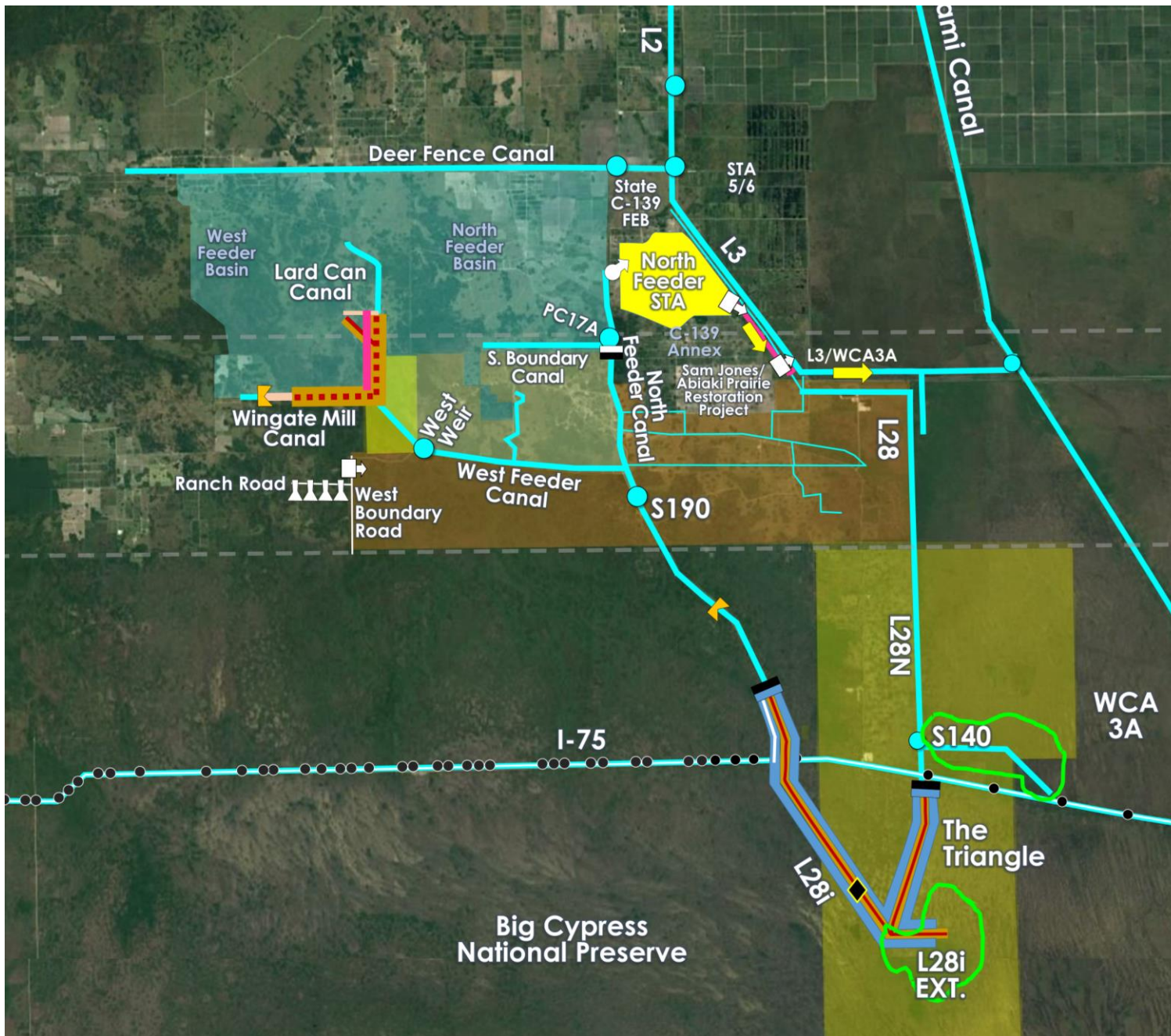




U.S. ARMY



WERP RECOMMENDED PLAN



LEGEND

- Seminole Tribe of Florida
- Miccosukee Tribe of Indians
- South Florida Water Management District Feeder Canal Basin Water Quality Program
- Existing Culverts
- Existing Structures
- Existing Canals
- Existing Roads

WERP FEATURES
(not to scale; not representative of final placement)

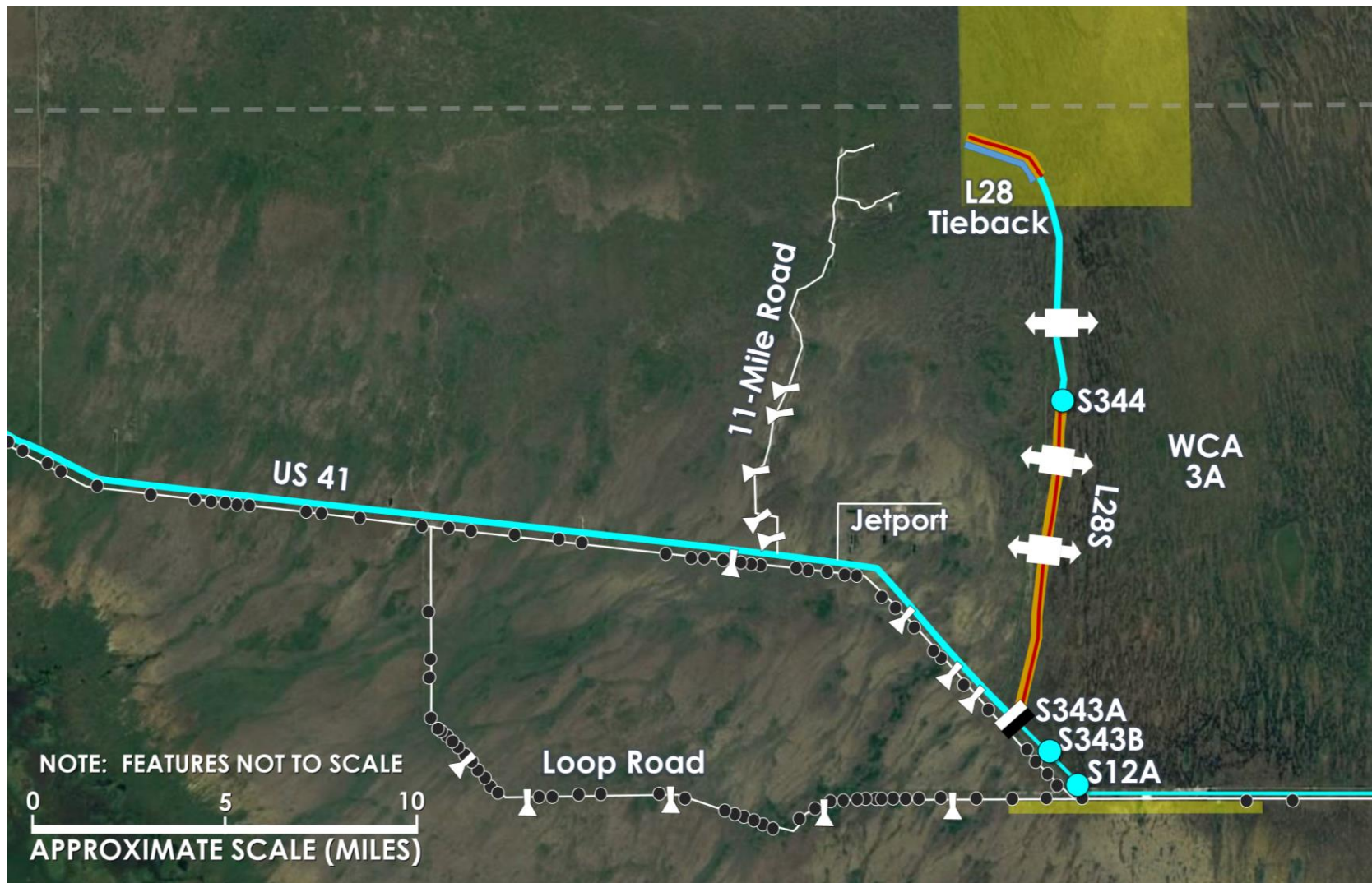
- Water Treatment
- Treated Water
- Spreader Canal
- Embankment
- Canal Backfill
- Canal Backfill/Degrade Levee
- Canal Modifications
- Plug
- Plug with Levee Tie-In
- Pump
- Inline Weir
- Gated Culvert
- Culvert
- Bi-Directional Control Structure
- Ditch Backfill
- McCormack's Landing Restoration
- Vegetation Restoration



U.S. ARMY



WERP RECOMMENDED PLAN



LEGEND

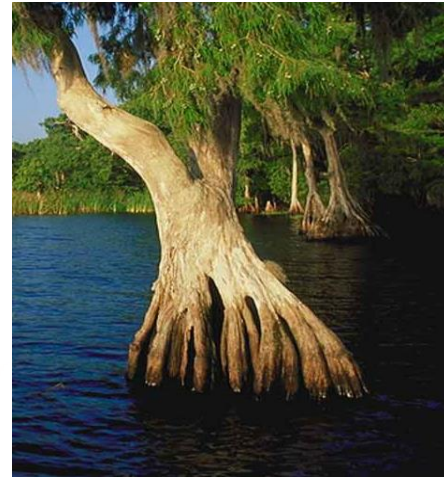
- Seminole Tribe of Florida
- Miccosukee Tribe of Indians
- South Florida Water Management District Feeder Canal Basin Water Quality Program
- Existing Culverts
- Existing Structures
- Existing Canals
- Existing Roads

WERP FEATURES

(not to scale; not representative of final placement)

- Water Treatment
- Treated Water
- Spreader Canal
- Embankment
- Canal Backfill
- Canal Backfill/Degrade Levee
- Canal Modifications
- Plug
- Plug with Levee Tie-In
- Pump
- Inline Weir
- Gated Culvert
- Culvert
- Bi-Directional Control Structure
- Ditch Backfill
- McCormack's Landing Restoration
- Vegetation Restoration

REstoration, COordination, VERification (RECOVER)

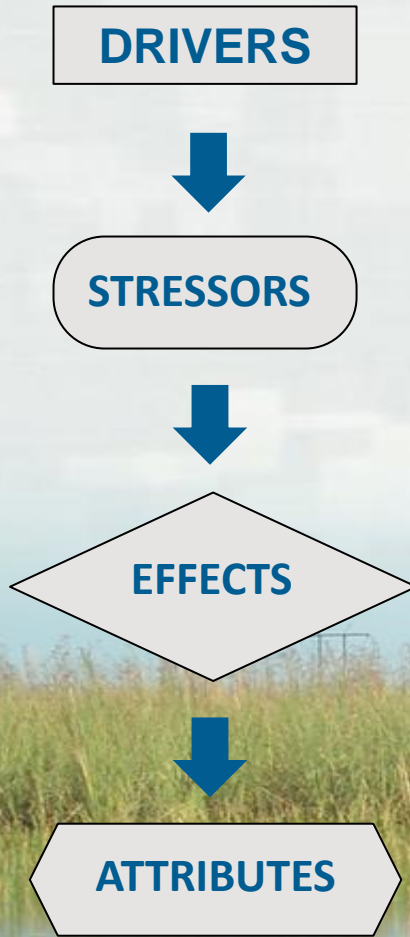


Applied Science Strategy

Conceptual Ecological Models

Monitoring and Assessment Plan

Adaptive Management



CERP MONITORING AND ASSESSMENT PLAN

Restoration Coordination and VERification
(RECOVER)

the journey to restore
America's Everglades

Comprehensive Everglades Restoration Plan

Central and Southern Florida Project

Revised
December 2009

Adaptive Management Integration Guide

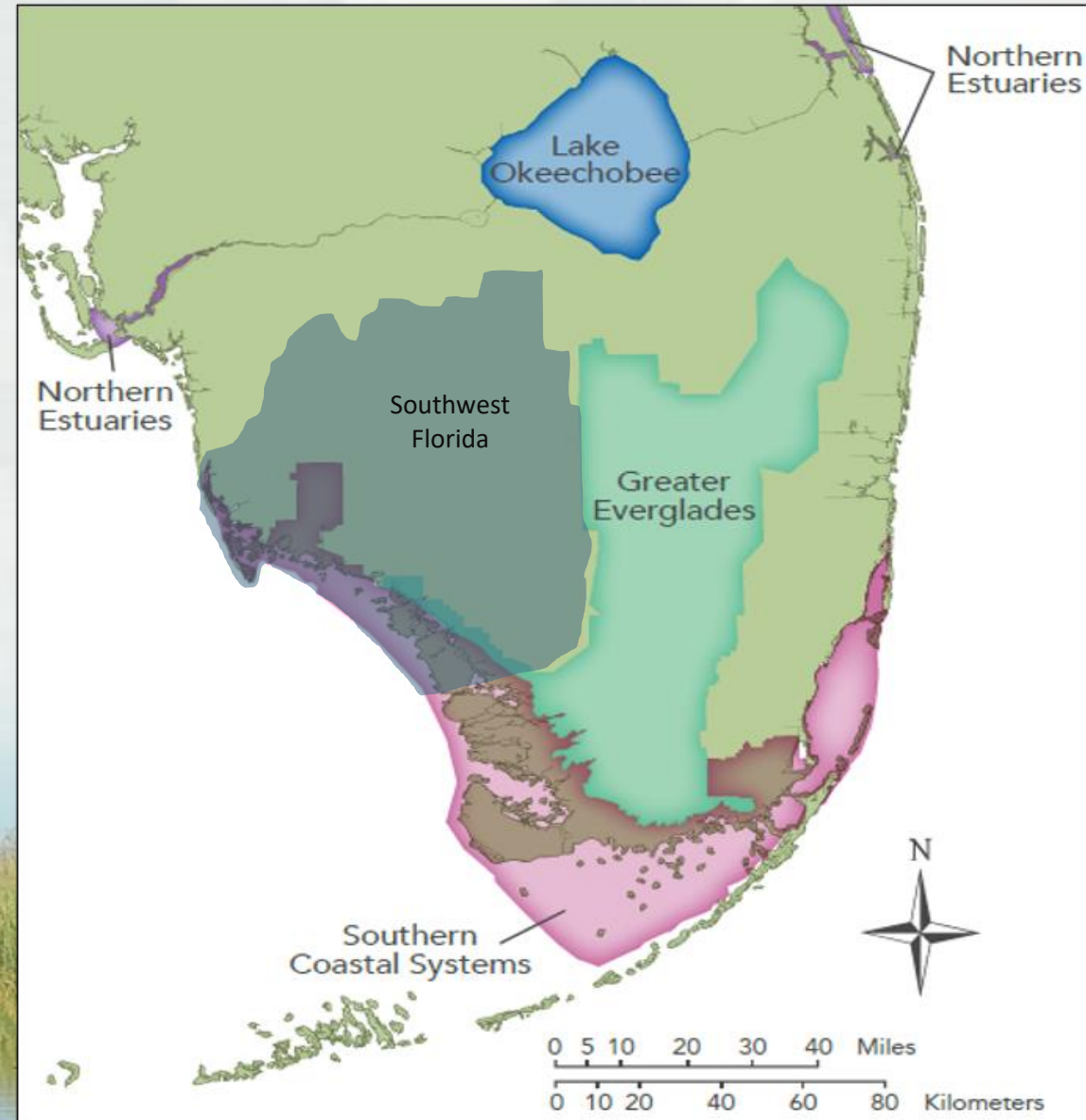
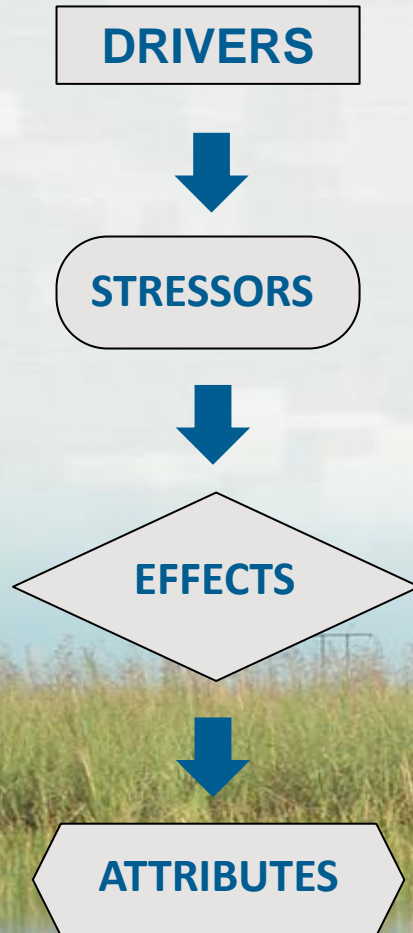
The Comprehensive Everglades Restoration Plan

March 2011

the journey to restore
America's Everglades

Applied Science Strategy

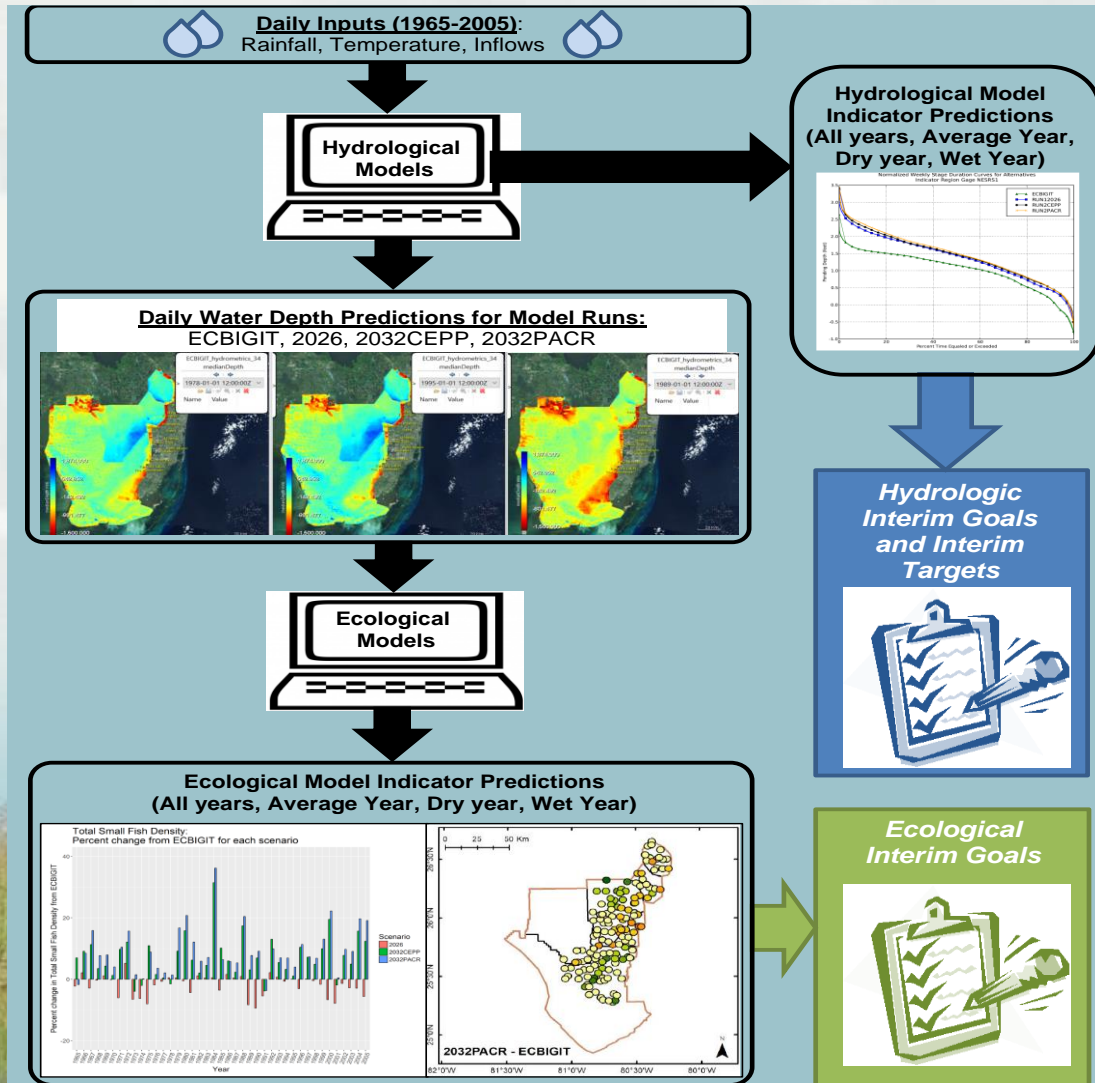
Conceptual Ecological Models



Performance Measures

Evaluation/Model land

Assessment/Reality



Incorporation of Indigenous Knowledge



Miccosukee Tribe of Indians of Florida

Business Council Members
Talbert Cypress, Chairman

Lucas K. Osceola, Assistant Chairman
Kenneth H. Cypress, Treasurer

William J. Osceola, Secretary
Pete Osceola, Jr., Lawmaker

January 25th, 2024

Martha Williams
Director
U.S. Fish and Wildlife Service
1849 C St., NW
Washington, DC 20240

Colonel James L. Booth
United States Army Corps of Engineers
Jacksonville District
701 San Marco Boulevard
Jacksonville, FL 32207

Drew Bartlett
Executive Director
South Florida Water Management District
3301 Gun Club Road
West Palm Beach, FL 33406

SUBJECT: Statement of Indigenous Traditional Ecological Knowledge Regarding Historic Miccosukee Water Conservation Area 3-A Conditions

The Miccosukee Tribe of Indians of Florida is a federally-recognized sovereign Native American Tribe, based in the Central and Western Everglades. The Everglades, and the Miccosukee people that live within it, have suffered from water mismanagement. In our last statement of Indigenous Traditional Ecological Knowledge (sent March 24th, 2023) prepared in collaboration with our Everglades Advisory Committee, we highlighted the impacts of seasonal closures of the S-12 A & B flow gates, specifically as it relates to the negative impacts of water depth, the negative impacts of impeded water flow, the specific impacts of engineered floods on tree islands and wading birds, and the need for holistic – rather than single-species – ecosystem management in the Everglades. This statement follows our prior statement, building on further interviews with our Everglades Advisory Committee, and focuses on historic water depths and

RECOVER & Miccosukee Tribe of Indians of Florida (MTIF) Field Visit Field Visit Summary November 18 th 2022	
WebEx Meeting Location https://usace1.webex.com/meet/rodrigo.sedeno	Join by Phone: USA Toll-Free: 1-844-800-2712

Attendees: Craig van der Heiden (MTIF), Gina Ralph (USACE), Jenna May (USACE), Marcel Bozas (MTIF), Phyllis Klarmann (SFWMD), Rodrigo Sedeno (USACE)

Site Visit Purpose: -A general tour of the Miccosukee Reservation
-Discuss Everglades Restoration and learn from each other's perspectives.

Objectives: - Learn and understand the challenges facing the MTIF Natural Resource Program
- Discuss various components of Indigenous Traditional Ecological Knowledge (ITEK)
- Provide MTIF information on RECOVER mission and processes.
- Identify paths for future collaboration.

Field Visit Summary:

1. Introduction





Incorporation of Indigenous Knowledge



US Army Corps
of Engineers

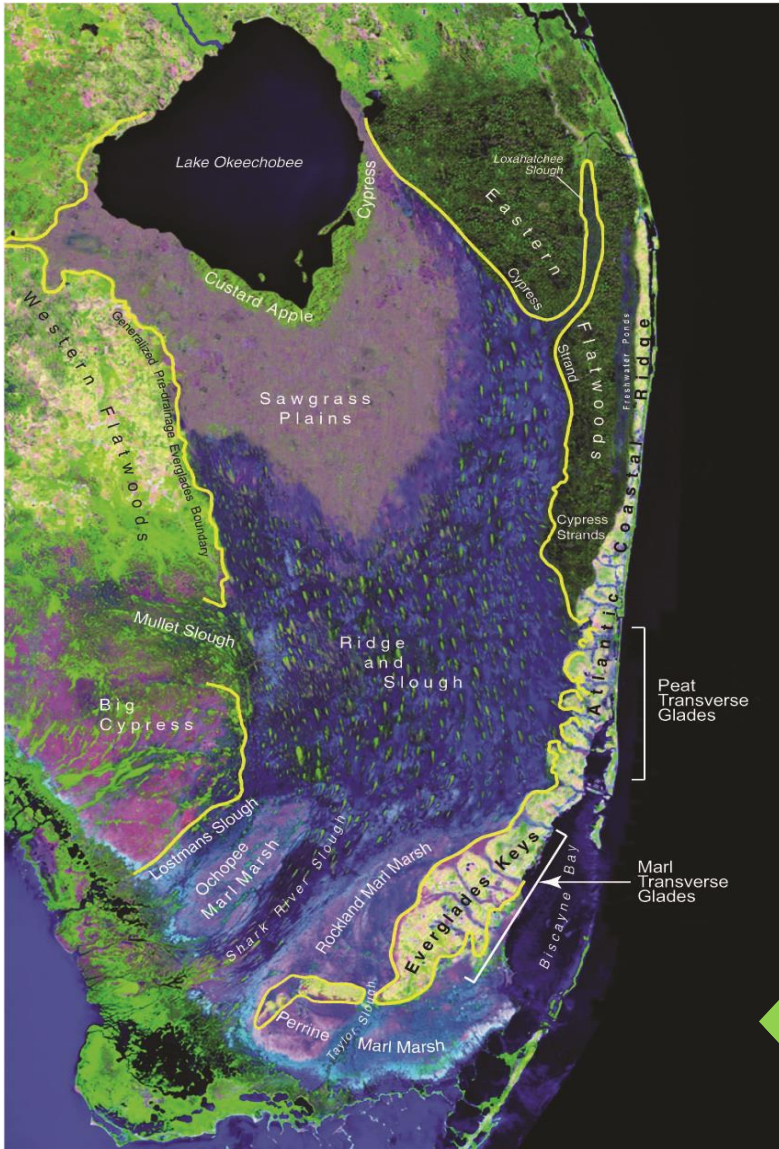
Incorporation of Indigenous Knowledge

Development of Tree Island Performance Measure





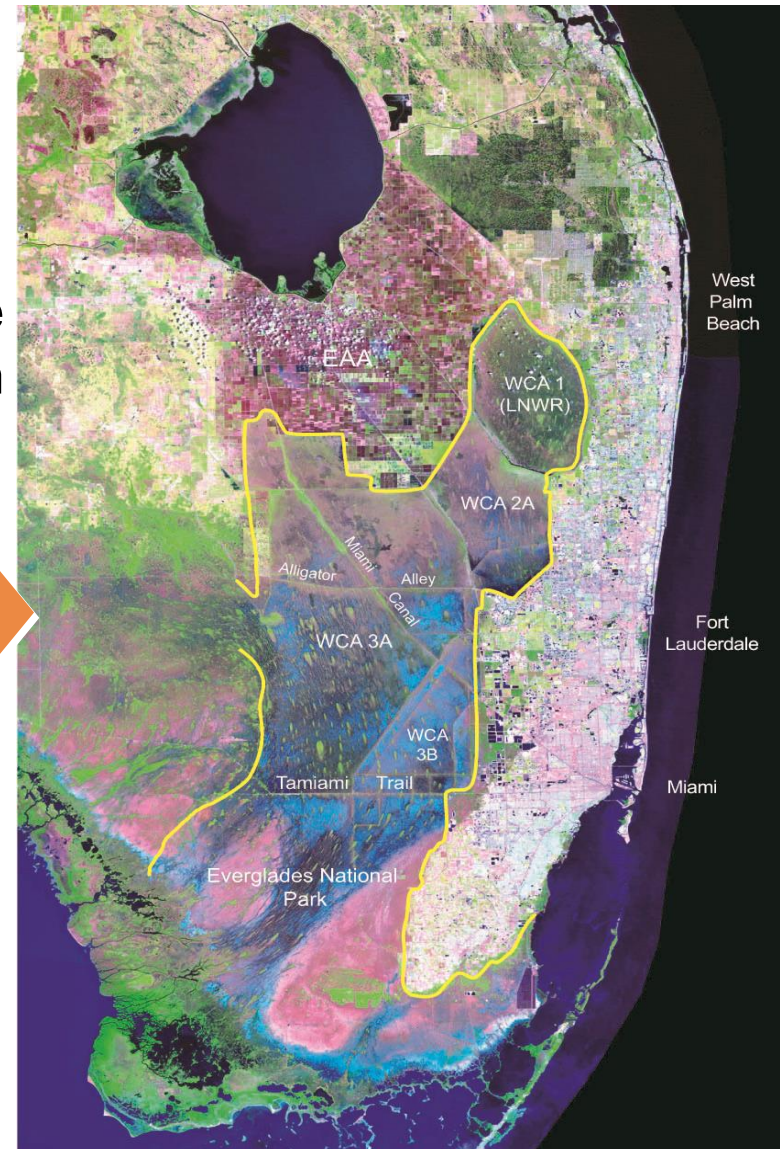
U.S. ARMY



Is it possible to go from this...



back to this?





U.S. ARMY

Questions?





U.S. ARMY

